

LOVELL
HOMES

PRESENTS



ST AIDAN'S GARDEN
BRANSTON

WELCOME TO



ST AIDAN'S GARDEN

BRANSTON

Just moments from lively market town Burton-on-Trent, St Aidan's Garden offers a stunning selection of 2, 3 & 4 bedroom homes for couples and families alike.

Designed to provide the best of modern living, first-time buyers and families looking for space to thrive will adore these homes built to stand the test of time with their thoughtfully designed specification and versatile living spaces.

Part of St Aidan's Garden's charm is its easy access to Burton-on-Trent, with a range of amenities just minutes from the development, including health services, and an eclectic selection of cafes and shops. Burton-on-Trent also enjoys strong links to Birmingham and Derby through its proximity to the A38, perfect for commuters and day trips.

At Lovell, we prioritise customer satisfaction from start to finish, and our spectacular new homes at St Aidan's Garden are sure to not disappoint.





Wild Walk show home interior



Spectrum@Houlton show home interior

Every one of the homes we build is built with one crucial extra element: pride. Lovell only builds high-quality homes and we make customer satisfaction our number one priority. This means that you enjoy extraordinary value for money, as well as a superior and distinctive home.

Lovell uses sustainable products wherever possible. So not only do our homes help look after the environment, but for homeowners, they also offer excellently insulated properties, minimal maintenance and they stand the test of time.

All of our homes are of extremely high quality and specification. Combining carefully considered contemporary design with rigorous build quality, Lovell homes are designed with flair, character and attention to detail. We want your home to be interesting, inviting and individual.

Most of all, once you step through the front door, we want you to know you're home.



Spectrum@Houlton show home interior



ST AIDAN'S GARDEN
BRANSTON



It's what makes
our homes unique

**At Lovell we believe your home should be more than about the right place at the right price.
It should also reflect your personality and tastes.**

That's why every Lovell home has Style, Quality and Value (or SQV, as we call it) built-in from the start, making your new home somewhere you'll be proud to call your own.

S

INSPIRING STYLE

A Lovell home is well-known for contemporary design and featuring the latest in stylish fixtures and fittings, but that's not all. With the Lovell Inspirations range you can add all sorts of extras to make it truly your own.

Q

UNRIVALLED QUALITY

We are particularly proud of the superior specification and workmanship every one of our properties offers, with a rigorous attention to detail you'll simply love.

V

EXCEPTIONAL VALUE

But most of all, you'll love how surprisingly affordable and easy to own a Lovell home can be, especially with the range of purchase options available.



ST AIDAN'S GARDEN
BRANSTON



LIFE AT ST AIDAN'S GARDEN

From its spot on the edge of Burton-on-Trent, St Aidan's Garden enjoys strong links to local amenities, offering a range of leisure, entertainment, and retail opportunities.

The town is well-equipped for residents at St Aidan's Garden, with a doctor's surgery, pharmacy, dental surgery, and Sainsbury's supermarket within easy reach. Popular food options include all-you-can-eat Chinese buffet Wing Wah, Café B and the Hideaway, perfect for family meals or brunch with friends. Burton-on-Trent also offers a plethora of independent shops for retail therapy, from high-street fashion brands to stylish home goods.

Families also benefit from well-rated primary schools within walking distance and the local high school just a short drive away, plus a leisure complex and playground close by for children, perfect for afternoons outside and local activities.

With the development's position on the edge of the town, nature lovers will love the open green spaces on their doorstep, including the local Sinai Park Woodlands, the parks nestled along the River Trent, and Branston Water Park offering lakeside walks for all weathers.



River Trent, Burton-on-Trent



PLACES TO SEE,
LOCATIONS TO EXPLORE



Cannock Chase



Peak District National Park

Burton-on-Trent is the perfect launch point, from which stunning dales and Areas of Natural Beauty are just a short drive away. From Cannock Chase, perfect for family walks, adventurers and cyclists, to some of the most picturesque vistas in the Peak District, St Aidan's Garden offers exciting days out within easy reach.

Alton Towers is also accessible for a fun family day out with exciting roller coasters and rides.

St Aidan's Garden also offers the chance to delve into local history, including four National Trust attractions within half an hour's drive and plenty of local museums celebrating Burton-on-Trent's proud history of brewing and pottery.



Alton Towers



Burton-on-Trent



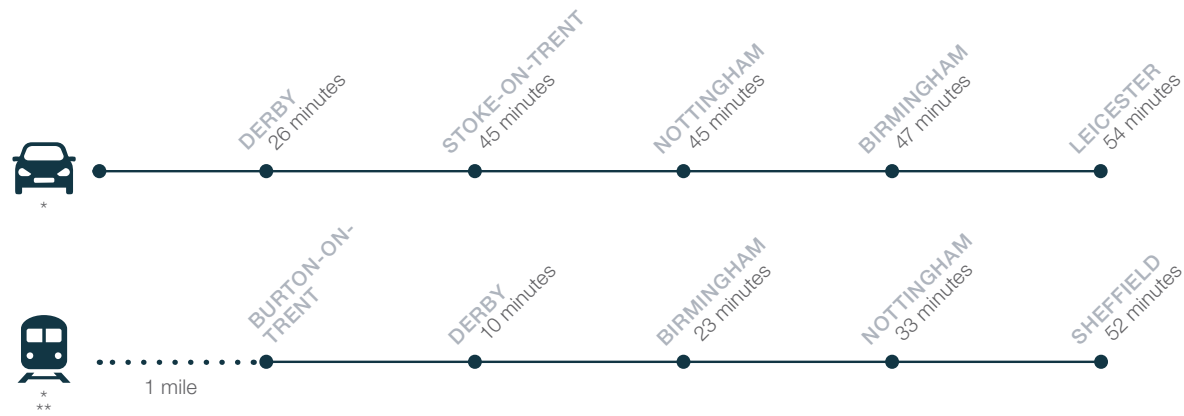
ST AIDAN'S GARDEN
BRANSTON



IDEALLY LOCATED

For commuters and travellers, St Aidan's Garden enjoys the benefits of proximity to Burton-on-Trent's train station just over a mile away, with services to many cities across the UK, including Nottingham, Sheffield and Birmingham, making commuting smooth and simple.

By road, Burton-on-Trent offers robust access to the M1 and M6, providing strong links to major towns and cities across the UK. The A38 is also close by with a direct link to the heart of Derby, while the A50 connects Burton-on-Trent with the neighbouring Nottingham. In all, Burton-on-Trent offers strong access to major hubs without losing its country charm.

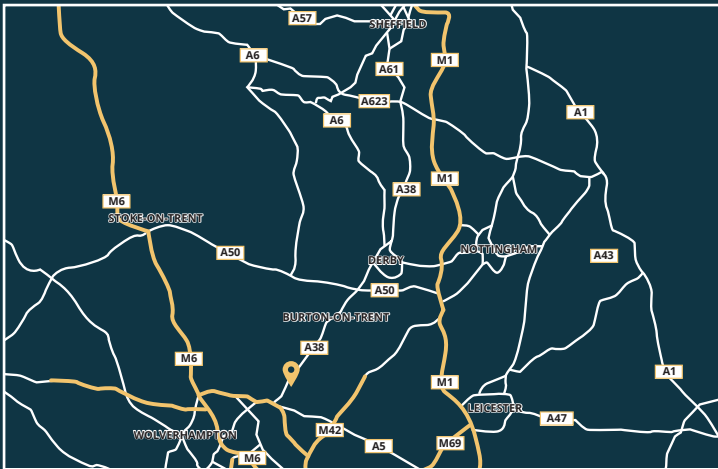


ST AIDAN'S GARDEN
BRANSTON

*Distances and times taken from Google Maps & the Trainline.co.uk. **Travel times from Burton-on-Trent train station.

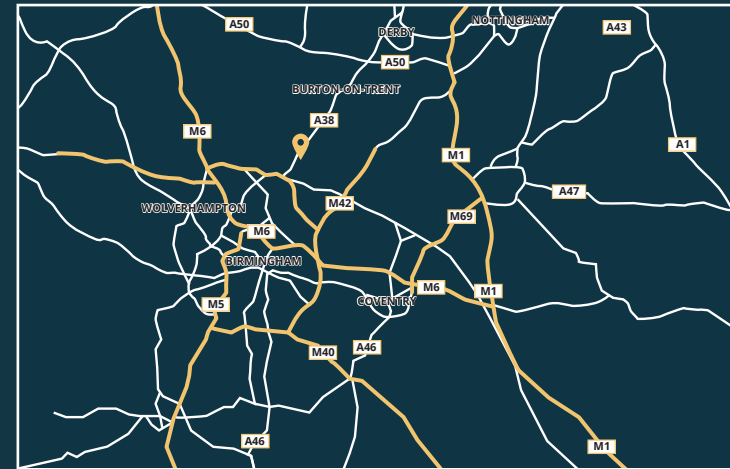
FROM THE NORTH

On the A38 southbound towards Burton and Birmingham, stay on for nine miles, passing through Findern and Willington. At the Clay Mills junction, take the slip road and turn left onto the A5121 towards Burton. Follow the A5121 for about two miles, passing through Shobnall and Horninglow. At the roundabout with Derby Road, take the second exit and continue on the A5121. Turn right onto Wellington Road and then left onto Wetmore Road. Turn right onto Hawkins Lane and then left onto Wharf Road. Turn right onto Anglesey Road and then left onto Anglesey Business Park.



FROM THE SOUTH

Start on the A38(M) and head northeast for about two miles. Merge onto the M6 and continue for about 18 miles. At junction 11A, take the exit for the M6 Toll and follow it for about 27 miles. At junction T4, take the exit for the A38 and follow it for about nine miles. At the roundabout, take the third exit onto the A5121 and follow it for about three miles. Turn left onto Wellington Road and then right onto Shobnall Road. Turn left onto Princess Way and then right onto Forest Road. Turn left onto Henhurst Hill and then right onto Henhurst Ridge. Your destination will be on the right.



ST AIDAN'S GARDEN
BRANSTON



HOW TO PURCHASE

Buying a new Lovell home couldn't be easier. Follow our guide and you'll be home in no time!



CHOOSE AND RESERVE

Secure your new home with a reservation fee which goes towards the total purchase price. It's then reserved in your name while the legal processes are completed.



KEEPING THINGS MOVING

Pass our Sales Executive your solicitor's details so that we can send on the contract documents. Arrange your mortgage if you need one. You can do this yourself or we can put you in touch with an Independent Financial Advisor to help.



EXCHANGING CONTRACTS

Once you've had your formal mortgage offer, your solicitor will inform you when it's time to exchange contracts. You will now pay your deposit, which will be sent to us with your signed contract.



NEARLY THERE

Under the terms of the contract we need to allow time for financial completion. Once this has happened, we will ask your solicitor to request funds and pay the balance of the purchase price. The deeds are transferred into your name and you now own your new Lovell home!



MOVING IN

We will arrange for your meters to be read on the day of legal completion. Our Sales Executive will hand you the keys and a handover certificate.

The direction your new home faces, its exterior details and construction materials may differ from what you see in this brochure. Individual features such as kitchen and bathroom layouts, doors and windows may vary. The illustrations used throughout are indicative and may be subject to change. For detailed information on individual plots, ask our sales staff. The dimensions in the brochure are within 50mm (2") but shouldn't be used as an accurate basis for furnishings, furniture or appliance spaces. You will need to take actual measurements. Specification details are subject to change without prior notice. Should a replacement be required, this will be to an equal or higher standard. Consequently these particulars represent a general guide only and cannot be relied upon as accurately describing and of the Specified Matters prescribed by any order made under Consumer Protection from Unfair Trading Regulations 2008 (CPRs). Development Name is a marketing name and may not form part of the final postal address. This brochure is a purchasing guide and does not form a contract, part of a contract or a warranty. Details are correct at time of going to print.



ST AIDAN'S GARDEN
BRANSTON

Shobnall Road, Branston, DE14 2BB

T: 01283 893 436



 @lovell_uk

 /lovellhomes

lovell.co.uk

LOVELL
HOMES

A **MORGAN SINDALL GROUP** COMPANY

THE DEVELOPMENT



ST AIDAN'S GARDEN
BRANSTON





ST AIDAN'S GARDEN

BRANSTON



This development layout plan depicts the intended and development mix at the time of going to press, however those intentions may change and a purchaser cannot rely on the details shown on this plan. Landscaping shown is only indicative. Any queries should be raised through the conveyancing process in the usual way. Elevations may vary, please see external layouts from Sales Executive.

DEVELOPMENT LAYOUT



The Gainsborough
2 bedroom home
Plots 3, 16, 68, 69, 70, 71



The Lansdown
3 bedroom home
Plots 2, 15, 65, 66, 105, 106, 109, 110



The Newbury
3 bedroom home
Plots 60, 64, 112



The Copperfield
3 bedroom home
Plots 84, 86, 88, 90, 91, 94, 95



The Redbourne
4 bedroom home
Plots 61, 62, 111



Affordable Rent
Plots 20, 21, 28-36, 39, 46-59, 119-137, 146-152, 156, 157, 164-171, 173-190



The Lamberhurst
3 bedroom home
Plots 113, 114, 115



The Milford
3 bedroom home
Plots 4, 10, 72



The Newbury V2
3 bedroom home
Plots 5, 13, 18, 19, 102



The Matlock
3 bedroom home
Plots 82, 85, 89, 93, 97, 98



The Stockwood
4 bedroom home
Plots 1, 7, 17, 67, 73, 116



Shared Ownership
Plots 22-27, 37, 38, 40-45, 138-145, 153-155, 158-163, 172



The Hilton
3 bedroom home
Plots 76, 77, 78, 79



The Milford V2
3 bedroom home
Plots 6, 14, 63, 103, 104, 107, 108



The Regan
3 bedroom home
Plots 80, 81, 100, 101



The Walton
4 bedroom home
Plots 8, 9, 11, 12, 74, 75, 117, 118



The Middleton
4 bedroom home
Plots 83, 87, 92, 96, 99

THE SPECIFICATION



ST AIDAN'S GARDEN
BRANSTON

	The Gainsborough	The Lamberhurst	The Hilton	The Lansdown	The Milford	The Newbury	The Regan	The Copperfield	The Matlock	The Walton	The Redbourne	The Stockwood	The Middleton
Kitchen													
Symphony Kitchen Units	•	•	•	•	•	•	•	•	•	•	•	•	•
Soft Close Doors and Drawers	•	•	•	•	•	•	•	•	•	•	•	•	•
1.5 Bowl Stainless Sink to Kitchen	•	•	•	•	•	•	•	•	•	•	•	•	•
Chrome Tap to Kitchen	•	•	•	•	•	•	•	•	•	•	•	•	•
Single Bowl Stainless Sink to Utility							•				•		•
Zanussi Brushed Steel Single Electric Oven	•												
Zanussi Brushed Steel Double Electric Oven		•	•	•	•	•	•	•	•				
Bosch Brushed Steel Double Electric Oven										•	•	•	•
Zanussi Brushed Steel 4 Ring Gas Hob	•	•	•	•	•	•	•	•	•				
Bosch Brushed Steel 5 Ring Gas Hob										•	•	•	•
Stainless Steel Splashback to Hob	•	•	•	•	•	•	•	•	•	•	•	•	•
Zanussi Integrated Fridge Freezer	•	•	•	•	•	•	•	•	•	•	•	•	•
Zanussi Integrated Dishwasher										•	•	•	•
95mm Laminated Upstands To Match Worktop	•	•	•	•	•	•	•	•	•	•	•	•	•
Electrolux Brushed Steel Chimney Hood	•	•	•	•	•	•	•	•	•				
Bosch Brushed Steel Chimney Hood										•	•	•	•
LED Under Cabinet Lighting										•	•	•	•
Bathroom													
Ideal Standard Sanitaryware	•	•	•	•	•	•	•	•	•	•	•	•	•
Mira Shower	•	•	•				•						
Porcelanosa Tiling	•	•	•	•	•	•	•	•	•	•	•	•	•
Chrome Towel-rail to Bathroom		•	•	•	•	•	•	•	•	•	•	•	•
Cloakroom													
Ideal Standard Sanitaryware	•	•	•	•	•	•	•	•	•	•	•	•	•
Porcelanosa Tiling	•	•	•	•	•	•	•	•	•	•	•	•	•
Ensuite													
Ideal Standard Sanitaryware				•	•	•	•	•	•	•	•	•	•
Mira Shower				•	•	•	•	•	•	•	•	•	•
Porcelanosa Tiling				•	•	•	•	•	•	•	•	•	•
Chrome Towel-rail to Ensuite										•	•	•	•

	The Gainsborough	The Lamberhurst	The Hilton	The Lansdown	The Milford	The Newbury	The Regan	The Copperfield	The Matlock	The Walton	The Redbourne	The Stockwood	The Middleton
Electrics													
White Slimline Sockets & Switches & Media Plate	•	•	•	•	•	•	•	•	•	•	•	•	•
BT Points to Lounge, Bedroom 1 & Downstairs Store	•	•	•	•	•	•	•	•	•	•	•	•	•
TV Points to Lounge and Bedroom 1	•	•	•	•	•	•	•	•	•	•	•	•	•
External Light to Front of Property	•	•	•	•	•	•	•	•	•	•	•	•	•
Chrome Downlighters to Kitchen	•	•	•	•	•	•	•	•	•	•	•	•	•
Chrome Downlighters to Bathroom		•	•	•	•	•	•	•	•	•	•	•	•
Chrome Downlighters to Ensuite										•	•	•	•
Shaver socket to Bathroom										•	•	•	•
Internal and Decoration													
5 Panel Vertical Internal Doors in White Finish		•	•	•	•	•	•	•	•	•	•	•	•
6 Panel Internal Doors in White Finish	•												
Brass Chrome Ironmongery	•	•	•	•	•	•	•	•	•	•	•	•	•
Stelrad Elite Radiators	•												
Stelrad Compact Radiators		•	•	•	•	•	•	•	•	•	•	•	•
Combination Boiler	•	•	•	•	•	•							
Cylinder and Boiler							•	•	•	•	•	•	•
Honeywell Central Heating Programmer	•	•	•	•	•	•	•	•	•	•	•	•	•
External													
Outside Tap to Rear										•	•	•	•
Turf/Soft Landscaping to Front Garden	•	•	•	•	•	•	•	•	•	•	•	•	•
Turf to Rear Garden	•	•	•	•	•	•	•	•	•	•	•	•	•

THE GAINSBOROUGH

2 bedroom home



ST AIDAN'S GARDEN
BRANSTON

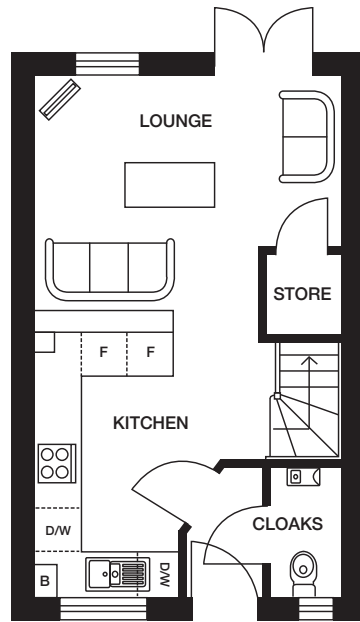


CGI shows plots 70-71
CGIs are indicative, external finishes and features may vary.

THE GAINSBOROUGH

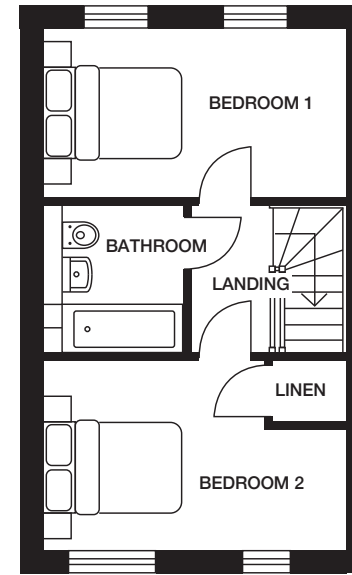
2 bedroom home

Plots 3, 16, 68, 69, 70, 71



Ground Floor

Living/Kitchen 4235mm x 7272mm 13'11" x 23'10"



First Floor

Bedroom 1 4235mm x 2377mm 13'11" x 7'10"

Bedroom 2 4235mm x 2639mm 13'11" x 8'8"

Bathroom 1960mm x 2070mm 6'5" x 6'10"

Computer generated images (CGIs) are not intended to convey an accurate representation of a property, its description, its setting nor its immediate surroundings. Such images are created from an imaginary viewpoint in an area of clean, open space and have been created in a way that is designed to give an impression of the individual design of a particular house or may be used to convey a typical street scene and are not intended to give the impression that any particular home or development will necessarily look like any of the images. Images are for illustrative purposes and final elevations and materials may differ. Dimensions stated are within 50mm (2") but should not be used as a basis for furnishings, furniture or appliance spaces etc. Dimensions for such purposes must be verified against actual site measurements. Please note the handing of plots, door and window positions may vary from the floor plans shown. Please check individual plot details with our sales team.

THE LAMBERHURST

3 bedroom home



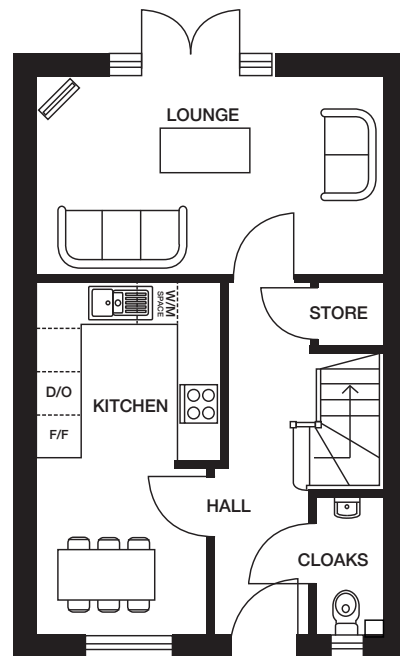
ST AIDAN'S GARDEN
BRANSTON

CGI shows plots 113-115
CGIs are indicative, external finishes and features may vary.

THE LAMBERHURST

3 bedroom home

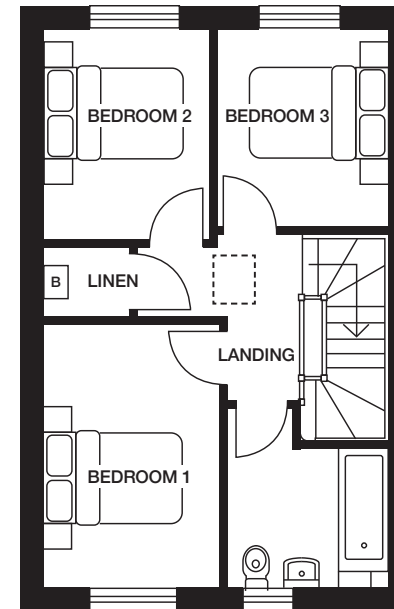
Plots 113, 114, 115



Ground Floor

Lounge 4798mm x 2779mm 15'9" x 9'1"

Kitchen/Dining 2560mm x 4962mm 8'5" x 15'5"



First Floor

Bedroom 1 3725mm x 2460mm 12'3" x 8'1"

Bedroom 2 2953mm x 2305mm 9'8" x 7'7"

Bedroom 3 2400mm x 2779mm 7'10" x 9'1"

Bathroom 2245mm x 2513mm 7'4" x 8'3"

Computer generated images (CGIs) are not intended to convey an accurate representation of a property, its description, its setting nor its immediate surroundings. Such images are created from an imaginary viewpoint in an area of clean, open space and have been created in a way that is designed to give an impression of the individual design of a particular house or may be used to convey a typical street scene and are not intended to give the impression that any particular home or development will necessarily look like any of the images. Images are for illustrative purposes and final elevations and materials may differ. Dimensions stated are within 50mm (2") but should not be used as a basis for furnishings, furniture or appliance spaces etc. Dimensions for such purposes must be verified against actual site measurements. Please note the handing of plots, door and window positions may vary from the floor plans shown. Please check individual plot details with our sales team.

THE HILTON
3 bedroom home



ST AIDAN'S GARDEN
BRANSTON

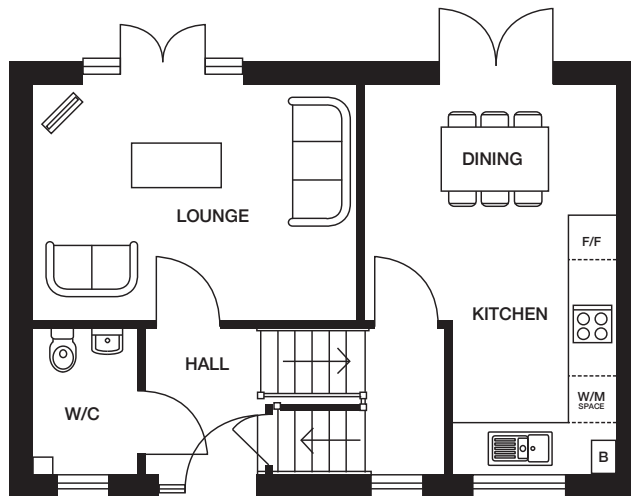
CGI shows plot 79
CGIs are indicative, external finishes and features may vary.



THE HILTON

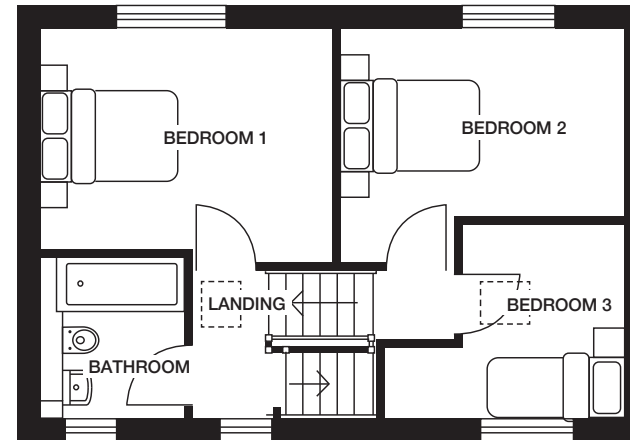
3 bedroom home

Plots 76, 77, 78, 79



Ground Floor

Lounge 4310mm x 3106mm 14'2" x 10'2"
 Kitchen/Dining 3318mm x 5134mm 10'11" x 16'10"



First Floor

Bedroom 1 3860mm x 3106mm 12'8" x 10'2"
 Bedroom 2 3768mm x 3106mm 12'4" x 10'2"
 Bedroom 3 3205mm x 2556mm 10'6" x 8'5"
 Bathroom 1885mm x 2110mm 6'2" x 6'11"

Computer generated images (CGIs) are not intended to convey an accurate representation of a property, its description, its setting nor its immediate surroundings. Such images are created from an imaginary viewpoint in an area of clean, open space and have been created in a way that is designed to give an impression of the individual design of a particular house or may be used to convey a typical street scene and are not intended to give the impression that any particular home or development will necessarily look like any of the images. Images are for illustrative purposes and final elevations and materials may differ. Dimensions stated are within 50mm (2") but should not be used as a basis for furnishings, furniture or appliance spaces etc. Dimensions for such purposes must be verified against actual site measurements. Please note the handing of plots, door and window positions may vary from the floor plans shown. Please check individual plot details with our sales team.

THE LANSDOWN
3 bedroom home



ST AIDAN'S GARDEN
BRANSTON

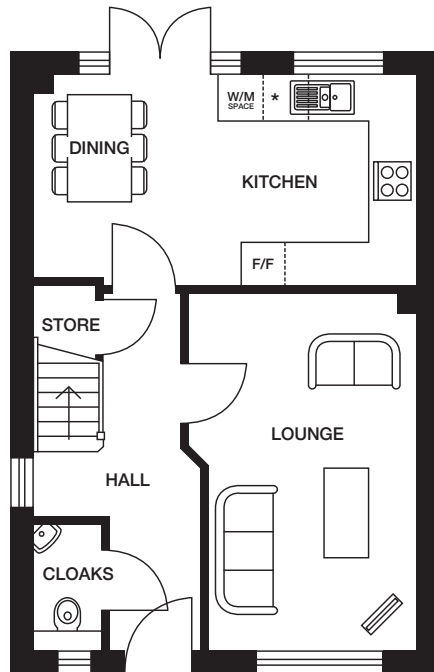


CGI shows plots 65-66
CGIs are indicative, external finishes and features may vary.

THE LANSDOWN

3 bedroom home

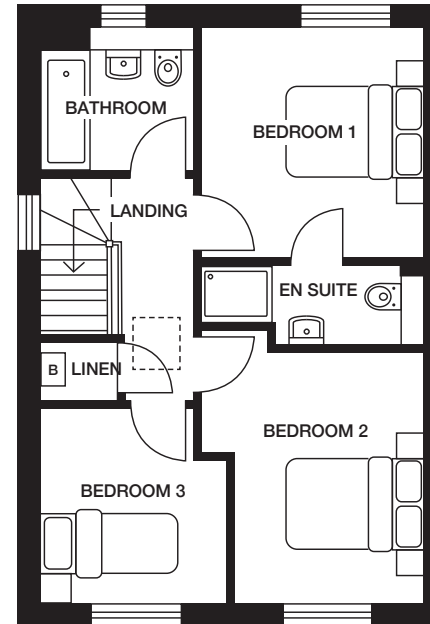
Plots 2, 15, 65, 66, 105, 106, 109, 110



Ground Floor

Lounge 3146mm x 4983mm 10'4" x 16'4"

Kitchen/Dining 5248mm x 2872mm 17'3" x 9'5"



First Floor

Bedroom 1 3085mm x 3181mm 10'1" x 10'5"

Bedroom 2 3085mm x 3781mm 10'1" x 12'5"

Bedroom 3 2535mm x 2738mm 8'4" x 9'0"

Bathroom 2070mm x 1970mm 6'9" x 6'6"

Computer generated images (CGIs) are not intended to convey an accurate representation of a property, its description, its setting nor its immediate surroundings. Such images are created from an imaginary viewpoint in an area of clean, open space and have been created in a way that is designed to give an impression of the individual design of a particular house or may be used to convey a typical street scene and are not intended to give the impression that any particular home or development will necessarily look like any of the images. Images are for illustrative purposes and final elevations and materials may differ. Dimensions stated are within 50mm (2") but should not be used as a basis for furnishings, furniture or appliance spaces etc. Dimensions for such purposes must be verified against actual site measurements. Please note the handing of plots, door and window positions may vary from the floor plans shown. Please check individual plot details with our sales team.

THE NEWBURY V2
3 bedroom home



ST AIDAN'S GARDEN
BRANSTON

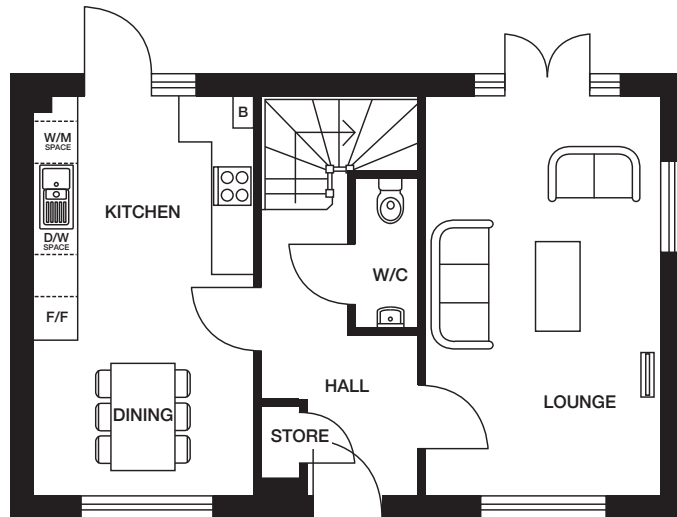


CGI shows plot 112
CGIs are indicative, external finishes and features may vary.

THE NEWBURY V2

3 bedroom home

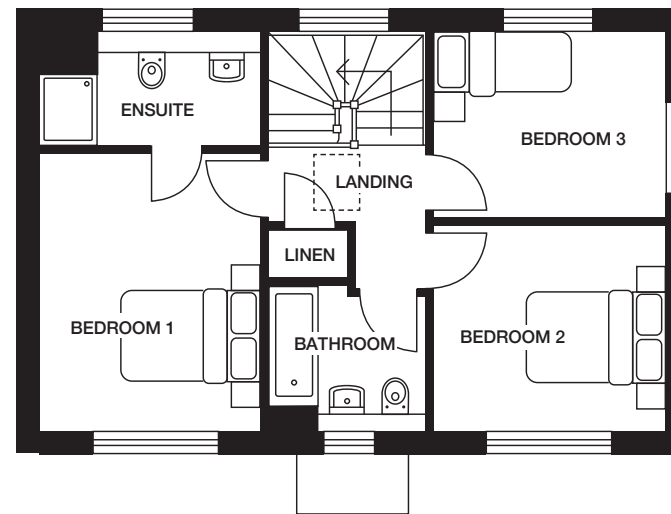
Plots 5, 13, 18, 19, 102



Ground Floor

Lounge 3212mm x 5472mm 10'6" x 17'11"

Kitchen/Dining 3028mm x 5472mm 9'11" x 17'11"



First Floor

Bedroom 1 3028mm x 3826mm 9'11" x 12'7"

Bedroom 2 3212mm x 2859mm 10'6" x 9'5"

Bedroom 3 3212mm x 2520mm 10'6" x 8'3"

Bathroom 2196mm x 1970mm 7'2" x 6'6"

Computer generated images (CGIs) are not intended to convey an accurate representation of a property, its description, its setting nor its immediate surroundings. Such images are created from an imaginary viewpoint in an area of clean, open space and have been created in a way that is designed to give an impression of the individual design of a particular house or may be used to convey a typical street scene and are not intended to give the impression that any particular home or development will necessarily look like any of the images. Images are for illustrative purposes and final elevations and materials may differ. Dimensions stated are within 50mm (2") but should not be used as a basis for furnishings, furniture or appliance spaces etc. Dimensions for such purposes must be verified against actual site measurements. Please note the handing of plots, door and window positions may vary from the floor plans shown. Please check individual plot details with our sales team.

THE MIDDLETON

4 bedroom home



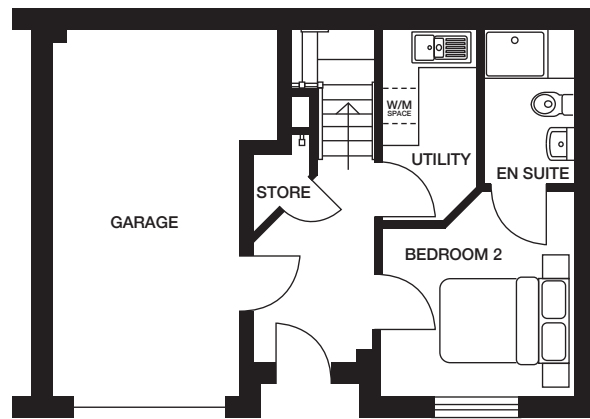
ST AIDAN'S GARDEN
BRANSTON

CGI shows plot 87
CGIs are indicative, external finishes and features may vary.

THE MIDDLETON

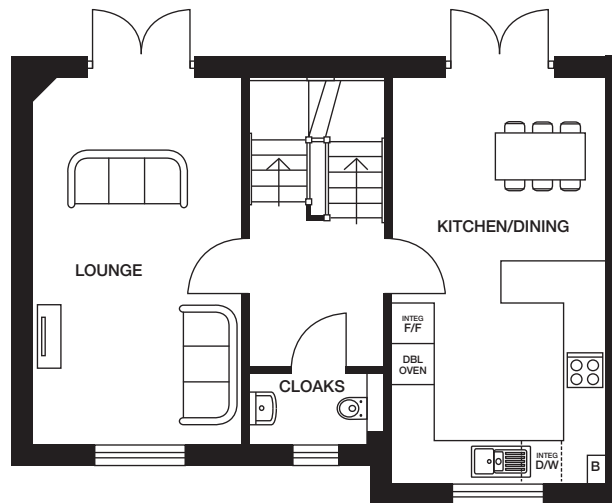
4 bedroom home

Plots 83, 87, 92, 96, 99



Lower Ground Floor

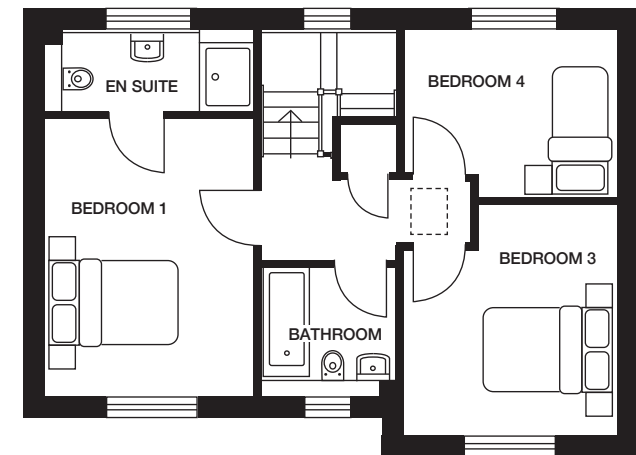
Bedroom 2 3110mm x 3320mm 10'2" x 10'11"



Upper Ground Floor

Lounge 3070mm x 5360mm 10'1" x 17'7"

Kitchen/Dining 3110mm x 5923mm 10'2" x 19'5"



First Floor

Bedroom 1 3070mm x 4107mm 10'1" x 13'6"

Bedroom 3 3110mm x 3388mm 10'2" x 11'1"

Bedroom 4 3110mm x 2441mm 10'2" x 8'0"

Bathroom 2046mm x 1917mm 6'9" x 6'3"

Computer generated images (CGIs) are not intended to convey an accurate representation of a property, its description, its setting nor its immediate surroundings. Such images are created from an imaginary viewpoint in an area of clean, open space and have been created in a way that is designed to give an impression of the individual design of a particular house or may be used to convey a typical street scene and are not intended to give the impression that any particular home or development will necessarily look like any of the images. Images are for illustrative purposes and final elevations and materials may differ. Dimensions stated are within 50mm (2") but should not be used as a basis for furnishings, furniture or appliance spaces etc. Dimensions for such purposes must be verified against actual site measurements. Please note the handing of plots, door and window positions may vary from the floor plans shown. Please check individual plot details with our sales team.

LOVELL
HOMES

THE COPPERFIELD

3 bedroom home



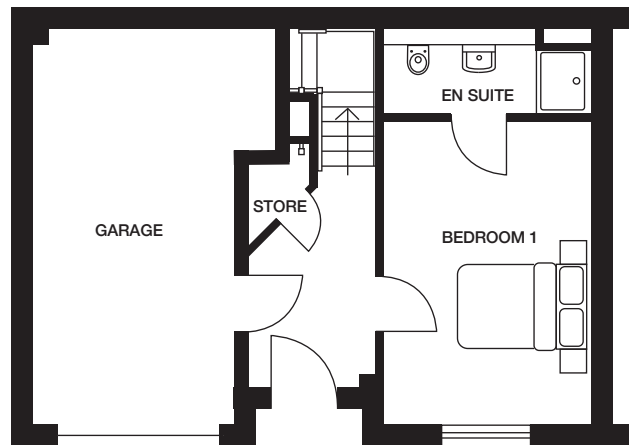
ST AIDAN'S GARDEN
BRANSTON

CGI shows plot 88
CGIs are indicative, external finishes and features may vary.

THE COPPERFIELD

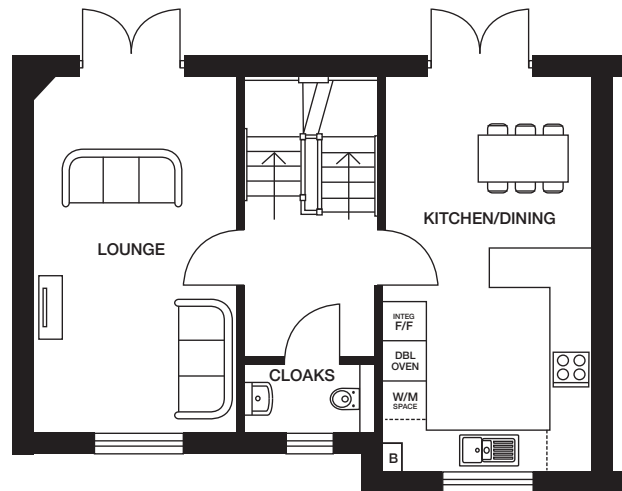
3 bedroom home

Plots 84, 86, 88, 90, 91, 94, 95



Lower Ground Floor

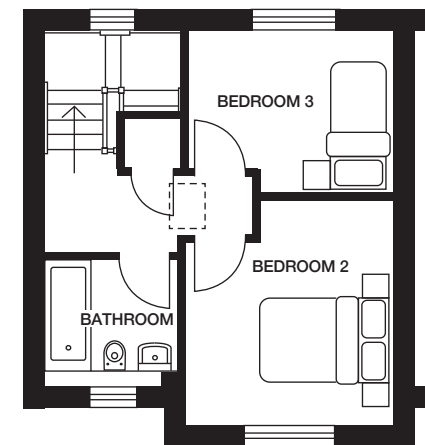
Bedroom 1 3110mm x 4580mm 10'2" x 15'0"



Upper Ground Floor

Lounge 3068mm x 5360mm 10'1" x 17'7"

Kitchen/Dining 3112mm x 5923mm 10'3" x 19'5"



First Floor

Bedroom 2 3110mm x 3388mm 10'2" x 11'1"

Bedroom 3 3112mm x 2441mm 10'3" x 8'0"

Bathroom 2045mm x 1917mm 6'9" x 6'3"

Computer generated images (CGIs) are not intended to convey an accurate representation of a property, its description, its setting nor its immediate surroundings. Such images are created from an imaginary viewpoint in an area of clean, open space and have been created in a way that is designed to give an impression of the individual design of a particular house or may be used to convey a typical street scene and are not intended to give the impression that any particular home or development will necessarily look like any of the images. Images are for illustrative purposes and final elevations and materials may differ. Dimensions stated are within 50mm (2") but should not be used as a basis for furnishings, furniture or appliance spaces etc. Dimensions for such purposes must be verified against actual site measurements. Please note the handing of plots, door and window positions may vary from the floor plans shown. Please check individual plot details with our sales team.

THE STOCKWOOD

4 bedroom home



ST AIDAN'S GARDEN
BRANSTON

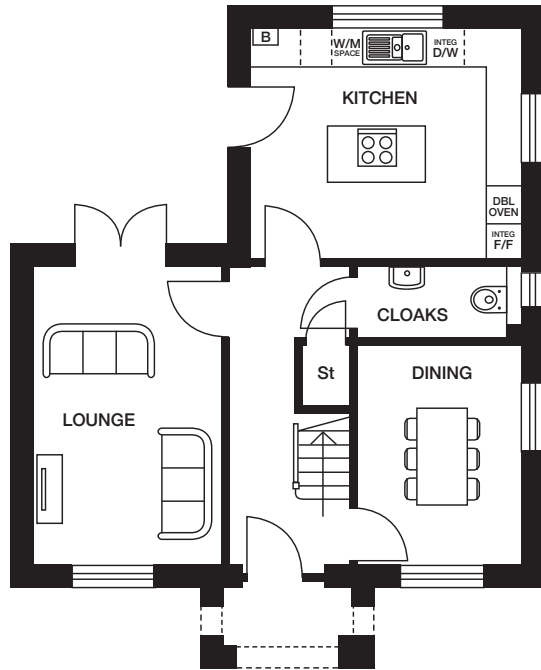
CGI shows plot 116
CGIs are indicative, external finishes and features may vary.



THE STOCKWOOD

4 bedroom home

Plots 1, 17, 67, 73, 116

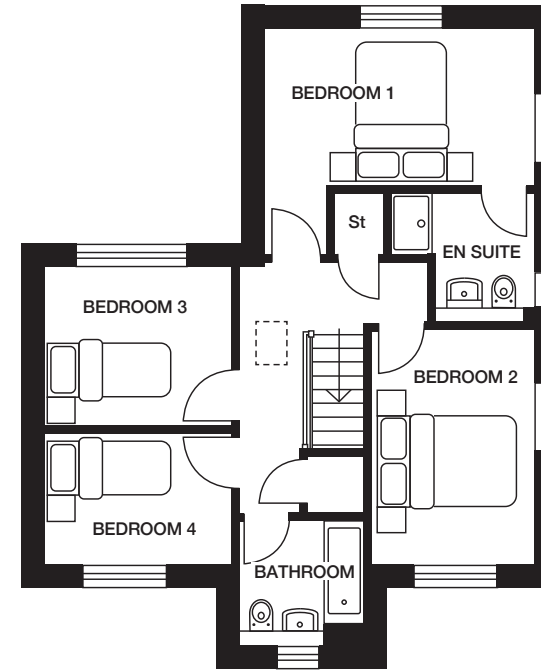


Ground Floor

Lounge 3111mm x 4909mm 10'2" x 16'1"

Kitchen 4459mm x 3844mm 14'8" x 12'7"

Dining 2720mm x 3633mm 8'11" x 11'11"



First Floor

Bedroom 1 4460mm x 3734mm 14'8" x 12'3"

Bedroom 2 2719mm x 3889mm 8'11" x 12'9"

Bedroom 3 3056mm x 2632mm 10'0" x 8'8"

Bedroom 4 3056mm x 2184mm 10'0" x 10'2"

Bathroom 2098mm x 2097mm 6'11" x 6'11"

Computer generated images (CGIs) are not intended to convey an accurate representation of a property, its description, its setting nor its immediate surroundings. Such images are created from an imaginary viewpoint in an area of clean, open space and have been created in a way that is designed to give an impression of the individual design of a particular house or may be used to convey a typical street scene and are not intended to give the impression that any particular home or development will necessarily look like any of the images. Images are for illustrative purposes and final elevations and materials may differ. Dimensions stated are within 50mm (2") but should not be used as a basis for furnishings, furniture or appliance spaces etc. Dimensions for such purposes must be verified against actual site measurements. Please note the handing of plots, door and window positions may vary from the floor plans shown. Please check individual plot details with our sales team.

THE REDBOURNE

4 bedroom home



ST AIDAN'S GARDEN
BRANSTON

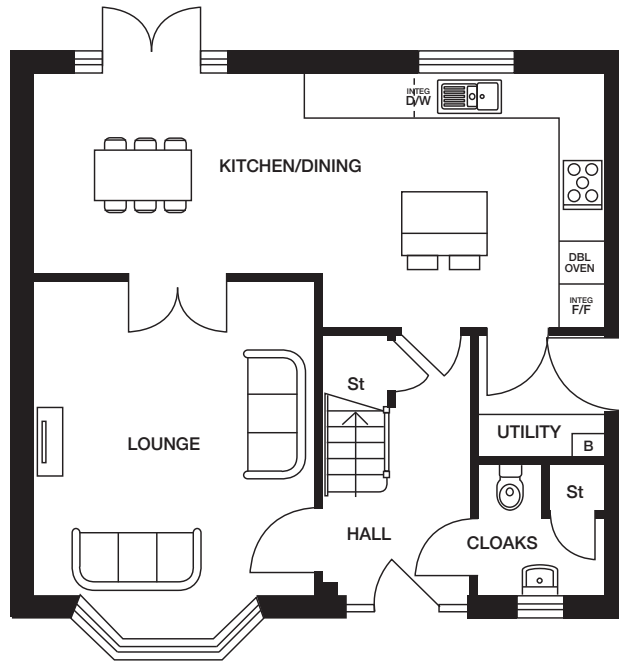
CGI shows plot 111
CGIs are indicative, external finishes and features may vary.



THE REDBOURNE

4 bedroom home

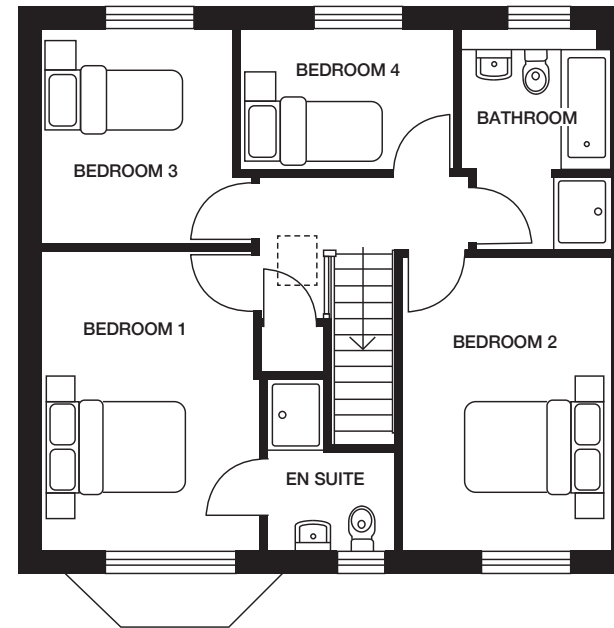
Plots 61, 62, 111



Ground Floor

Lounge 3894mm x 4940mm 12'9" x 16'2"

Kitchen/Dining 7948mm x 3550mm 26'1" x 11'8"



First Floor

Bedroom 1 3058mm x 4189mm 10'0" x 13'9"

Bedroom 2 2911mm x 4127mm 9'7" x 13'6"

Bedroom 3 2939mm x 2991mm 9'8" x 9'10"

Bedroom 4 3032mm x 1960mm 9'11" x 6'5"

Bathroom 2089mm x 3052mm 6'10" x 10'0"

Computer generated images (CGIs) are not intended to convey an accurate representation of a property, its description, its setting nor its immediate surroundings. Such images are created from an imaginary viewpoint in an area of clean, open space and have been created in a way that is designed to give an impression of the individual design of a particular house or may be used to convey a typical street scene and are not intended to give the impression that any particular home or development will necessarily look like any of the images. Images are for illustrative purposes and final elevations and materials may differ. Dimensions stated are within 50mm (2") but should not be used as a basis for furnishings, furniture or appliance spaces etc. Dimensions for such purposes must be verified against actual site measurements. Please note the handing of plots, door and window positions may vary from the floor plans shown. Please check individual plot details with our sales team.

THE WALTON
4 bedroom home



ST AIDAN'S GARDEN
BRANSTON

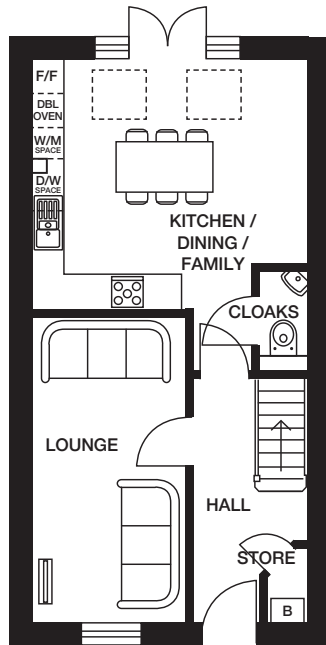
CGI shows plot 9
CGIs are indicative, external finishes and features may vary.



THE WALTON

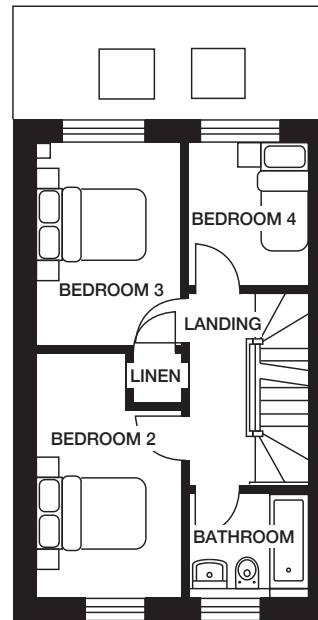
4 bedroom home

Plots 8, 9, 11, 12, 74, 75, 117, 118



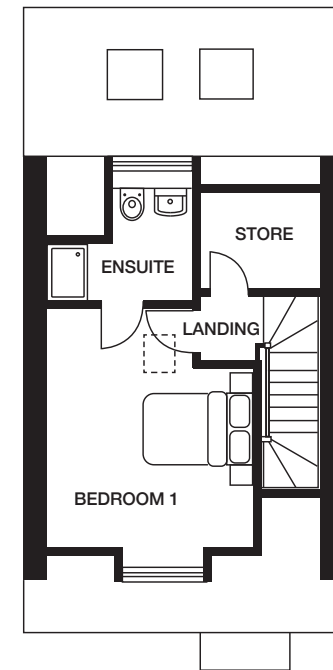
Ground Floor

Lounge 2735mm x 5385mm 9'0" x 17'8"
 Kit/Din/Fam 4797mm x 4381mm 15'9" x 14'4"



First Floor

Bedroom 2 2579mm x 4269mm 8'6" x 14'0"
 Bedroom 3 2579mm x 3697mm 8'6" x 12'2"
 Bedroom 4 2125mm x 2584mm 7'0" x 8'6"
 Bathroom 2125mm x 1904mm 7'0" x 6'3"



Second Floor

Bedroom 1 3683mm x 4489mm 12'1" x 14'9"

Computer generated images (CGIs) are not intended to convey an accurate representation of a property, its description, its setting nor its immediate surroundings. Such images are created from an imaginary viewpoint in an area of clean, open space and have been created in a way that is designed to give an impression of the individual design of a particular house or may be used to convey a typical street scene and are not intended to give the impression that any particular home or development will necessarily look like any of the images. Images are for illustrative purposes and final elevations and materials may differ. Dimensions stated are within 50mm (2") but should not be used as a basis for furnishings, furniture or appliance spaces etc. Dimensions for such purposes must be verified against actual site measurements. Please note the handing of plots, door and window positions may vary from the floor plans shown. Please check individual plot details with our sales team.

THE REGAN
3 bedroom home



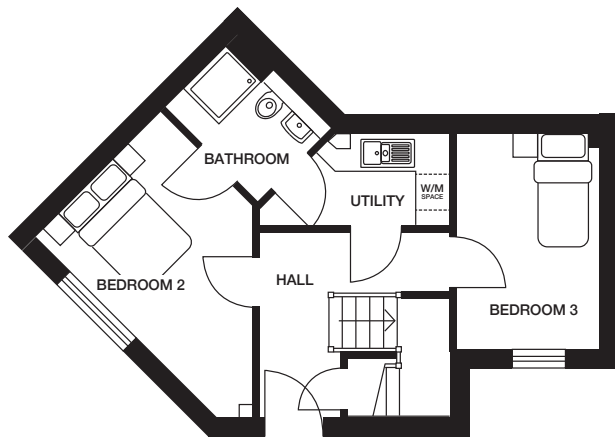
ST AIDAN'S GARDEN
BRANSTON

CGI shows plot 81
CGIs are indicative, external finishes and features may vary.

THE REGAN

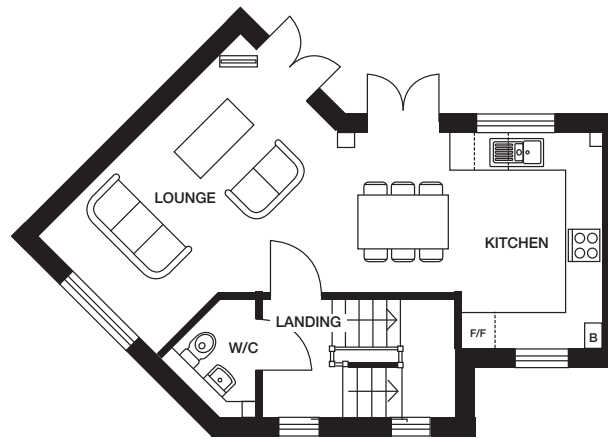
3 bedroom home

Plots 80, 81, 100, 101



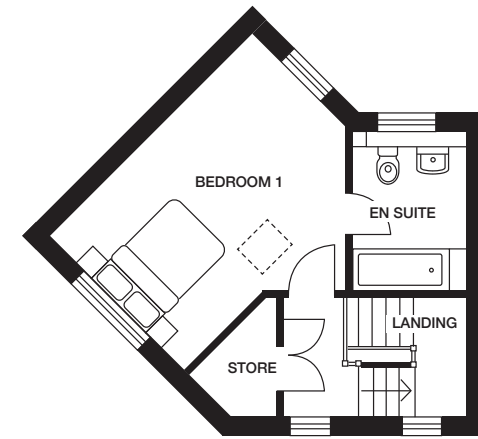
Lower Ground Floor

Bedroom 2 2915mm x 4592mm 9'7" x 15'1"
 Bedroom 3 2382mm x 3560mm 7'10" x 11'8"
 Bathroom 2172mm x 1676mm 7'2" x 5'6"



Upper Ground Floor

Living/Kitchen 4685mm x 9132mm 15'4" x 30'0"



First Floor

Bedroom 1 4685mm x 4107mm 15'4" x 13'6"

Computer generated images (CGIs) are not intended to convey an accurate representation of a property, its description, its setting nor its immediate surroundings. Such images are created from an imaginary viewpoint in an area of clean, open space and have been created in a way that is designed to give an impression of the individual design of a particular house or may be used to convey a typical street scene and are not intended to give the impression that any particular home or development will necessarily look like any of the images. Images are for illustrative purposes and final elevations and materials may differ. Dimensions stated are within 50mm (2") but should not be used as a basis for furnishings, furniture or appliance spaces etc. Dimensions for such purposes must be verified against actual site measurements. Please note the handing of plots, door and window positions may vary from the floor plans shown. Please check individual plot details with our sales team.



THE MATLOCK
3 bedroom home



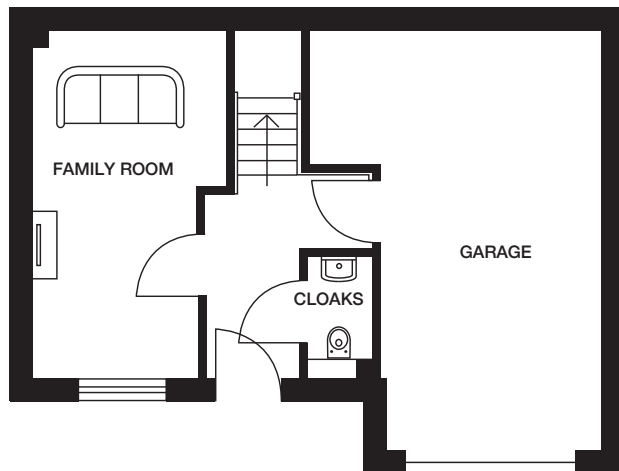
ST AIDAN'S GARDEN
BRANSTON

CGI shows plot 82
CGIs are indicative, external finishes and features may vary.

THE MATLOCK

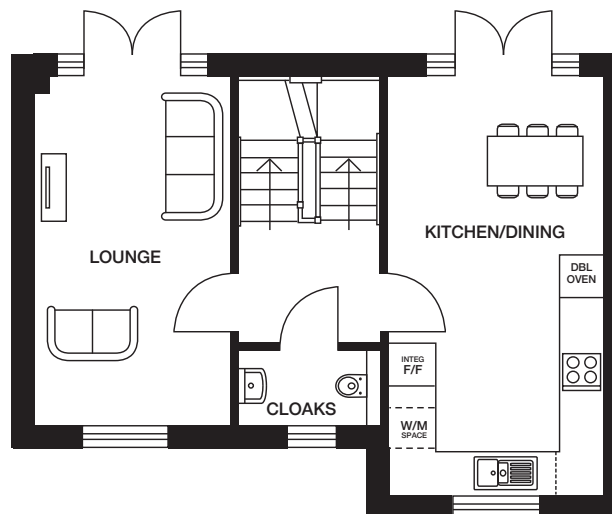
3 bedroom home

Plots 82, 85, 89, 93, 97, 98



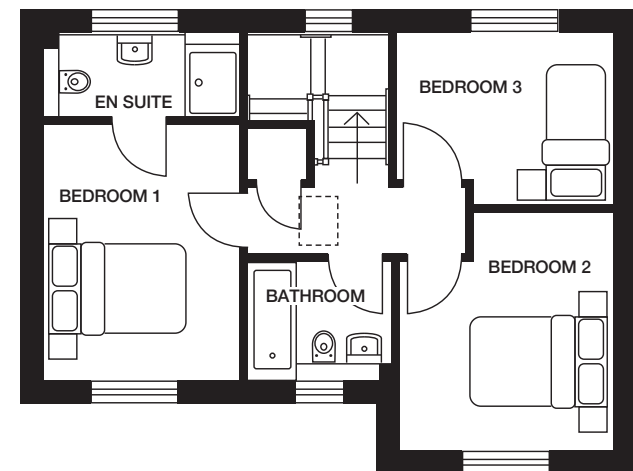
Lower Ground Floor

Family Room 2343mm x 4910mm 7'8" x 16'1"



Upper Ground Floor

Lounge 2781mm x 4910mm 9'1" x 16'1"
 Kitchen/Dining 3071mm x 5923mm 10'1" x 19'5"



First Floor

Bedroom 1 2781mm x 3656mm 9'1" x 12'0"
 Bedroom 2 3009mm x 3388mm 9'10" x 11'1"
 Bedroom 3 3071mm x 2441mm 10'1" x 8'0"
 Bathroom 2094mm x 1700mm 6'10" x 5'7"

Computer generated images (CGIs) are not intended to convey an accurate representation of a property, its description, its setting nor its immediate surroundings. Such images are created from an imaginary viewpoint in an area of clean, open space and have been created in a way that is designed to give an impression of the individual design of a particular house or may be used to convey a typical street scene and are not intended to give the impression that any particular home or development will necessarily look like any of the images. Images are for illustrative purposes and final elevations and materials may differ. Dimensions stated are within 50mm (2") but should not be used as a basis for furnishings, furniture or appliance spaces etc. Dimensions for such purposes must be verified against actual site measurements. Please note the handing of plots, door and window positions may vary from the floor plans shown. Please check individual plot details with our sales team.

THE NEWBURY
3 bedroom home



ST AIDAN'S GARDEN
BRANSTON

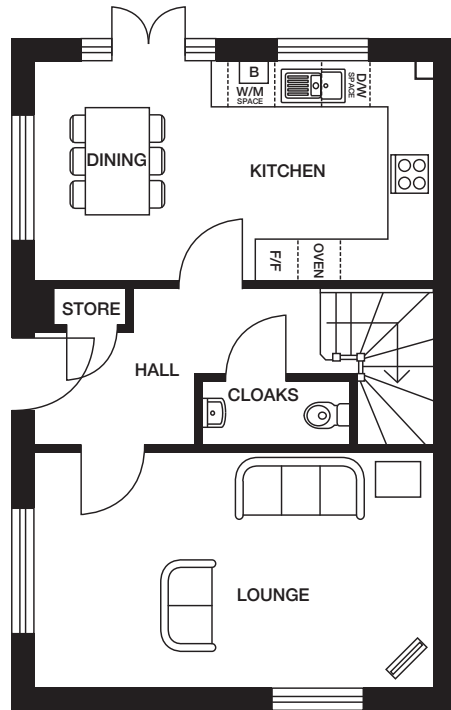


CGI shows plot 64
CGIs are indicative, external finishes and features may vary.

THE NEWBURY

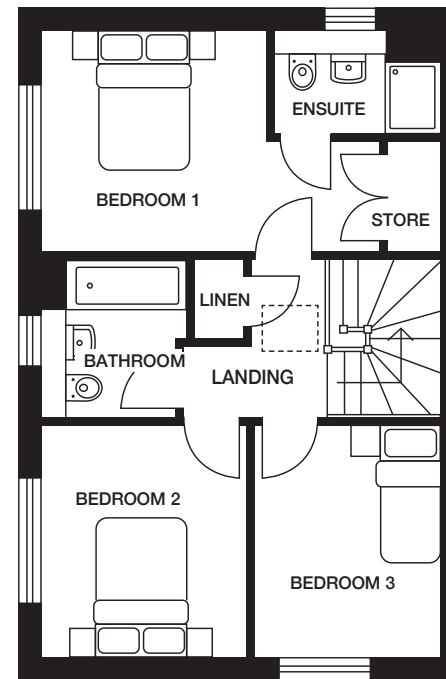
3 bedroom home

Plots 60, 64, 112



Ground Floor

Lounge 5472mm x 3212mm 17'11" x 10'6"
 Kitchen/Dining 5472mm x 3028mm 17'11" x 9'11"



First Floor

Bedroom 1 4669mm x 3028mm 15'4" x 9'11"
 Bedroom 2 2859mm x 3212mm 9'5" x 10'6"
 Bedroom 3 2520mm x 3212mm 8'3" x 10'6"
 Bathroom 1970mm x 2196mm 6'6" x 7'2"

Computer generated images (CGIs) are not intended to convey an accurate representation of a property, its description, its setting nor its immediate surroundings. Such images are created from an imaginary viewpoint in an area of clean, open space and have been created in a way that is designed to give an impression of the individual design of a particular house or may be used to convey a typical street scene and are not intended to give the impression that any particular home or development will necessarily look like any of the images. Images are for illustrative purposes and final elevations and materials may differ. Dimensions stated are within 50mm (2") but should not be used as a basis for furnishings, furniture or appliance spaces etc. Dimensions for such purposes must be verified against actual site measurements. Please note the handing of plots, door and window positions may vary from the floor plans shown. Please check individual plot details with our sales team.

THE MILFORD
3 bedroom home



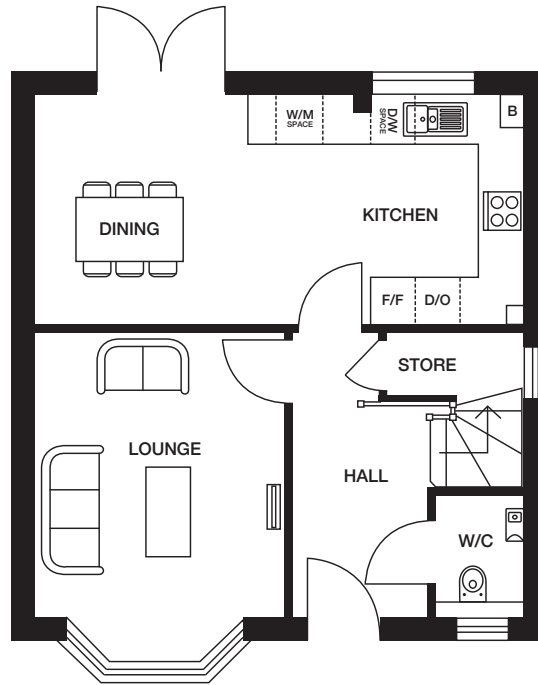
ST AIDAN'S GARDEN
BRANSTON

CGI shows plot 10
CGIs are indicative, external finishes and features may vary.

THE MILFORD

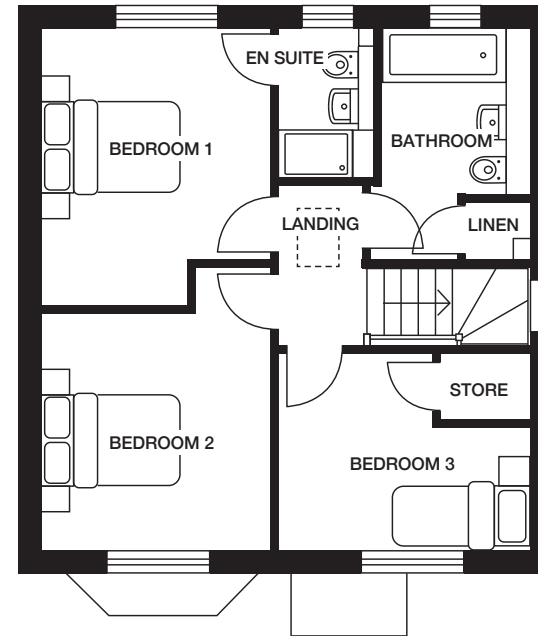
3 bedroom home

Plots 4, 10, 72



Ground Floor

Lounge 3314mm x 4352mm 10'10" x 14'3"
 Kitchen/Dining 6484mm x 3018mm 21'3" x 9'11"



First Floor

Bedroom 1 3044mm x 3696mm 10'0" x 12'1"
 Bedroom 2 3044mm x 3766mm 10'0" x 12'4"
 Bedroom 3 3347mm x 2622mm 11'0" x 8'7"
 Bathroom 1970mm x 3076mm 6'6" x 10'1"

Computer generated images (CGIs) are not intended to convey an accurate representation of a property, its description, its setting nor its immediate surroundings. Such images are created from an imaginary viewpoint in an area of clean, open space and have been created in a way that is designed to give an impression of the individual design of a particular house or may be used to convey a typical street scene and are not intended to give the impression that any particular home or development will necessarily look like any of the images. Images are for illustrative purposes and final elevations and materials may differ. Dimensions stated are within 50mm (2") but should not be used as a basis for furnishings, furniture or appliance spaces etc. Dimensions for such purposes must be verified against actual site measurements. Please note the handing of plots, door and window positions may vary from the floor plans shown. Please check individual plot details with our sales team.

THE MILFORD V2
3 bedroom home



ST AIDAN'S GARDEN
BRANSTON

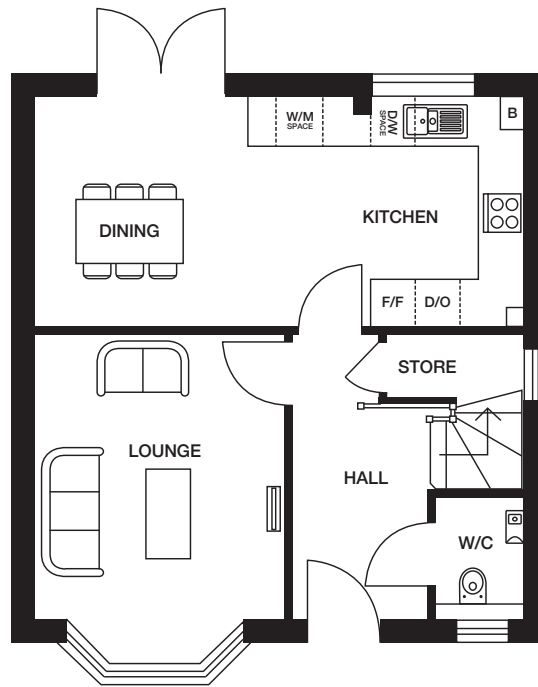


CGI shows plot 108
CGIs are indicative, external finishes and features may vary.

THE MILFORD V2

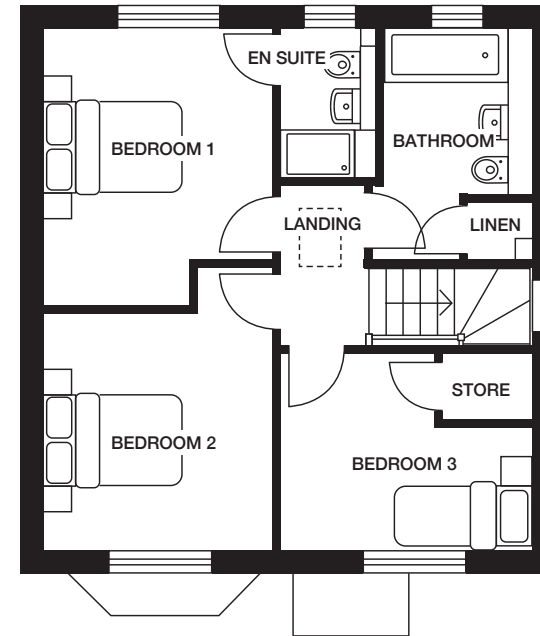
3 bedroom home

Plots 6, 14, 63, 103, 104, 107, 108



Ground Floor

Lounge 3314mm x 4352mm 10'10" x 14'3"
 Kitchen/Dining 6484mm x 3018mm 21'3" x 9'11"



First Floor

Bedroom 1 3044mm x 3696mm 10'0" x 12'2"
 Bedroom 2 3044mm x 3766mm 10'0" x 12'4"
 Bedroom 3 3347mm x 2622mm 11'0" x 8'7"
 Bathroom 1970mm x 3076mm 6'6" x 10'1"

Computer generated images (CGIs) are not intended to convey an accurate representation of a property, its description, its setting nor its immediate surroundings. Such images are created from an imaginary viewpoint in an area of clean, open space and have been created in a way that is designed to give an impression of the individual design of a particular house or may be used to convey a typical street scene and are not intended to give the impression that any particular home or development will necessarily look like any of the images. Images are for illustrative purposes and final elevations and materials may differ. Dimensions stated are within 50mm (2") but should not be used as a basis for furnishings, furniture or appliance spaces etc. Dimensions for such purposes must be verified against actual site measurements. Please note the handing of plots, door and window positions may vary from the floor plans shown. Please check individual plot details with our sales team.

THE STOCKWOOD V2

4 bedroom home



ST AIDAN'S GARDEN
BRANSTON

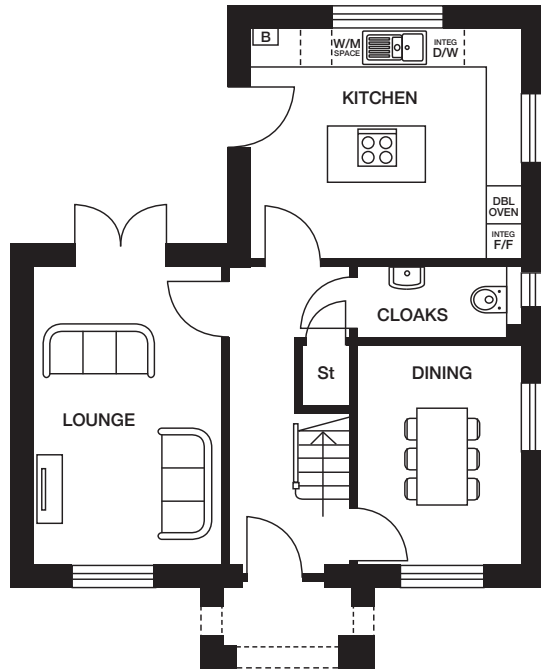
CGI shows plot 7
CGIs are indicative, external finishes and features may vary.



THE STOCKWOOD V2

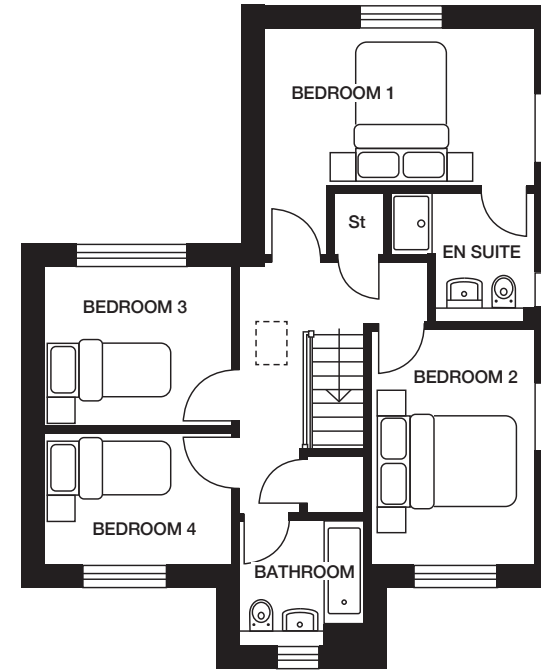
4 bedroom home

Plot 7



Ground Floor

Lounge 3111mm x 4909mm 10'2" x 16'1"
 Kitchen 4459mm x 3844mm 14'8" x 12'7"
 Dining 2720mm x 3633mm 8'11" x 11'11"



First Floor

Bedroom 1 4460mm x 3734mm 14'8" x 12'3"
 Bedroom 2 2719mm x 3889mm 8'11" x 12'9"
 Bedroom 3 3056mm x 2632mm 10'0" x 8'8"
 Bedroom 4 3056mm x 2184mm 10'0" x 10'2"
 Bathroom 2098mm x 2097mm 6'11" x 6'11"

Computer generated images (CGIs) are not intended to convey an accurate representation of a property, its description, its setting nor its immediate surroundings. Such images are created from an imaginary viewpoint in an area of clean, open space and have been created in a way that is designed to give an impression of the individual design of a particular house or may be used to convey a typical street scene and are not intended to give the impression that any particular home or development will necessarily look like any of the images. Images are for illustrative purposes and final elevations and materials may differ. Dimensions stated are within 50mm (2") but should not be used as a basis for furnishings, furniture or appliance spaces etc. Dimensions for such purposes must be verified against actual site measurements. Please note the handing of plots, door and window positions may vary from the floor plans shown. Please check individual plot details with our sales team.